



Lupton House

Saturday 1st October 2011

TOR BAY I N T E R F A I T H F O R U M F O R Y O U T H



Dramatic Encounters!

Face to Face with Difference

Kindly Funded by The Dulverton Trust

An interfaith drama workshop took place in the beautiful and historic Lupton House, Brixham facilitated by Bev Smerdon, Development Officer at Plymouth Centre for Faiths and Cultural Diversity



Young Peoples' Comments



I hope to make the people who gave up their time and money glad that they did so.

Lupton was a very beautiful, good place to relax and contemplate about anything, whether it is a big/small issue it helps you to think.



The workshop was very friendly and inclusive – I learnt a lot about friendship and making friends.

The discussions were educating and the activities were great fun.



TIFFY has truly affected my confidence in such a positive way.



TIFFY motivates me to keep coming to the events.



The atmosphere was great, everyone was laughing and interacting and having fun; these times are priceless.

I hope to remember that like today's drama, life is full of dramatic effects but we all cope with whatever comes our way, to perfect it.

We played games that created bonds between us.

TIFFY leaders and supporters with young people from Torquay Boys' Grammar School, Torquay Community College, Westlands School and Technology College, Churston Grammar School, St Cuthbert Mayne School, South Devon College, Exeter College and Exeter School.

Freeze frames were good because key points helped others see what is important to you.

Freeze frames let everyone see the emotions occurring at one moment in time.

Bev was excellent and very enthusiastic. She loved to get everyone involved.

Bev Smerdon



Freeze framing is a very good idea as it helped bond us.

Instead of lecturing someone, you can present a picture or reflection of how you feel through freeze frames. It gives a better perspective of your thoughts.

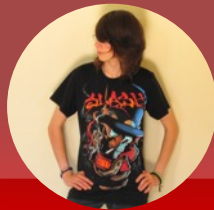
Everyone has been respectful and open.





Lupton House

TOR BAY I N T E R F A I T H F O R U M F O R Y O U T H



I have learned some useful acting tips and to see deeper into the feelings of others.



Diversity must be celebrated as it provides joy.

All the TIFFY members were friendly, fun and approachable.



Listening to different views was enjoyable because it was something new to learn.

Improvisation, I had never done it before. I really enjoyed it.

The food was really good.



The grounds are beautiful.



We covered some deep WHY questions.

The drama exercises were challenging and built confidence.

Lupton was a lovely setting. It was good to be 'left alone' not fussed over by the Centre staff.



The grounds appealed to me as a sense of diversity and the flow of nature everywhere.

The house was very spacious which allowed us to free our minds and go out of that class-room learning ideology.

The house feels very lonely without people but it is we who revive it with our friendship.

Lupton House has many stories and today we added another.

I loved the metaphor collection at the end.

Even though we explored complex ideas, we had a lot of fun.



I was impressed by the commitment to get involved with the sessions and the warmth of the friendships and welcome to me as a visitor.

Normally I hate drama but this opened my way of thinking and I enjoyed it.

It was nice to feel involved and **not** be pushed to do something you didn't feel comfortable with.

The whole trip made me feel the most welcome I have ever felt before.



Photographed & Designed by Dr Y. Mubashar

For further information
Mrs Heather Savini
01803 690079 or
savini@ukgateway.net